

A decorative white card with a colorful floral border, placed on a wooden surface with various flowers. The card features a vibrant, multi-colored floral pattern in the top-left corner, with swirling blue, yellow, and pink flowers and green leaves. The card is set against a warm, orange-brown wooden background. Several fresh flowers are scattered around the card, including purple lilies at the top, yellow tulips at the bottom left, and a red chrysanthemum at the bottom right. The overall scene is bright and aesthetically pleasing.

**Interactive Internet
Literacy for EFL
Teachers in Egypt**

Interactive Internet Literacy for EFL Teachers in Egypt

Ismail Fayed

Integrated English Language Program - II

E-mail: ifayed@aedegypt.org

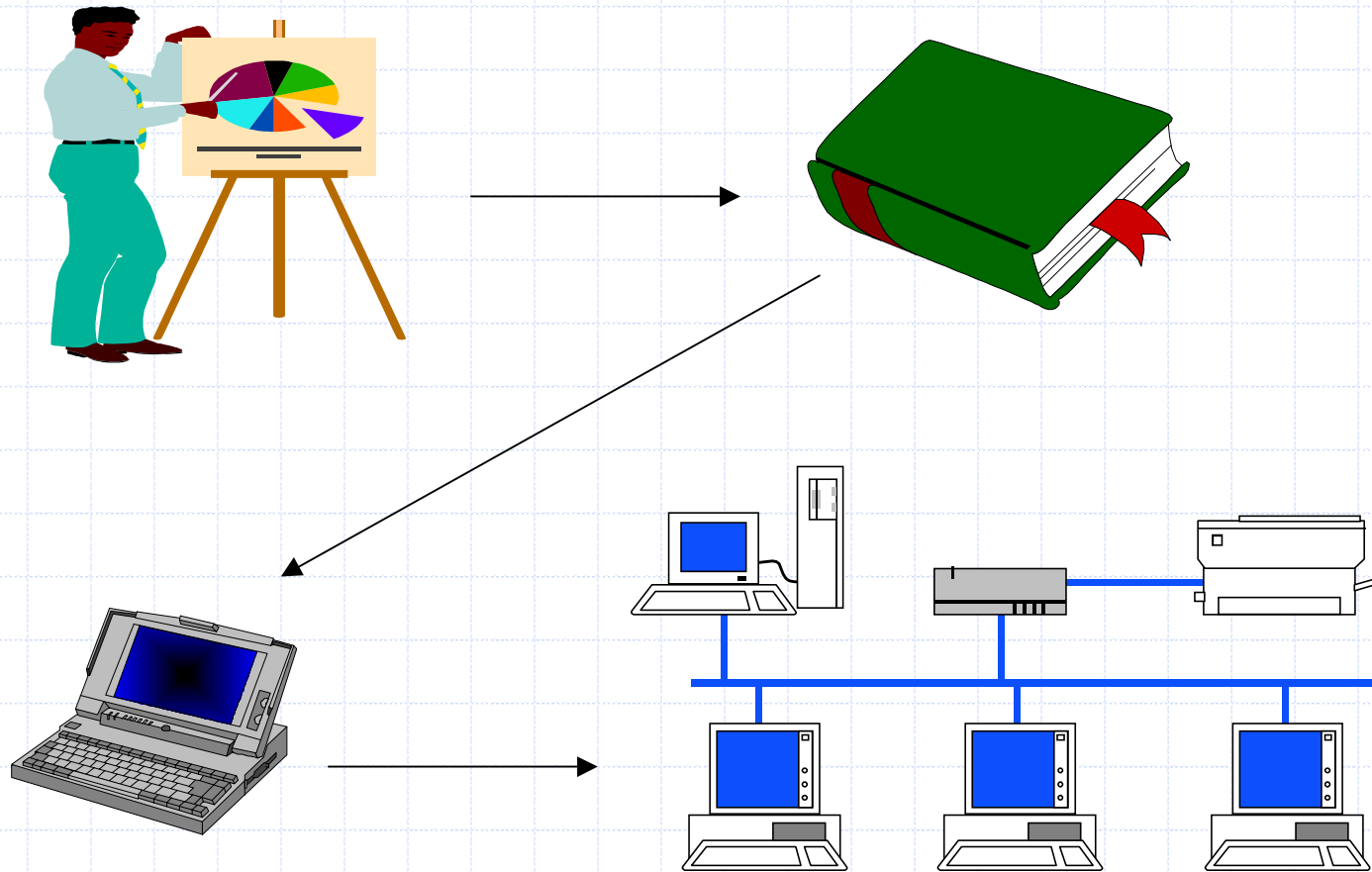
:Download this handout from the following URL

<http://www.yahogroups.com/files/eltegypr/handouts/auconference2001/ismail.htm>

:Or

<http://www.geocities.com/interactiveinternetliteracy/index.html>

Knowledge Development



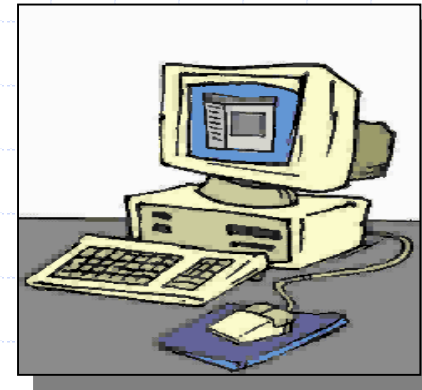
Goals & Objectives of Using The Internet :Technology in Shools

- Explore the world ♦
- :Improve communication and cooperation among ♦
 - Students ♦
 - Teachers ♦
 - Both ♦
- Motivate most students to participate and respond ♦
- Encouraging autonomous learning among students ♦
- Exchanging resources ♦
- Assist in self-learning and error correction ♦



:Barriers

- The use of technology-aided activities need to be carefully monitored** ◆
- Lack of both the logistic and human experts in many of the developing countries** ◆
- Lack of technical experience and knowledge** ◆
- You can not rely on the net all the time** ◆
- The negative attitude of some faculty members toward technology** ◆
- !Students' Technophobia** ◆
- !!Teachers' Technophobia** ◆



(-: bJã ~ãî^ Áí â á ðÉë~âÇpâãë (1))

:**Objectives:** E-mail can give **learners** some opportunities to

Interact with other learners and teachers ✉

Communicate with people from different cultures and from far distant areas and countries 📧

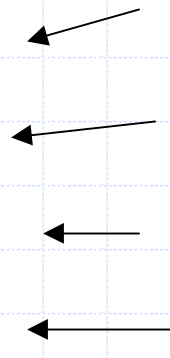
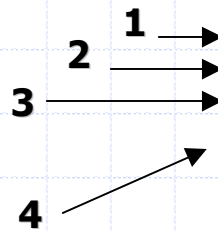
Encourage groupwork, team-spirit and involvement in different communities ✉

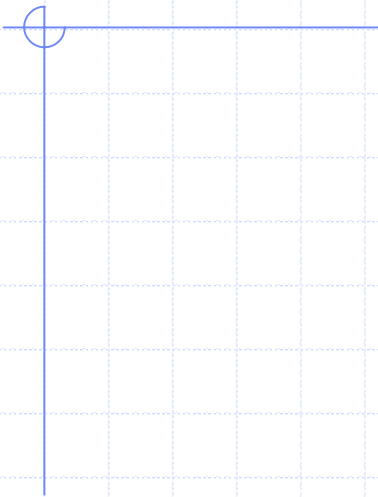
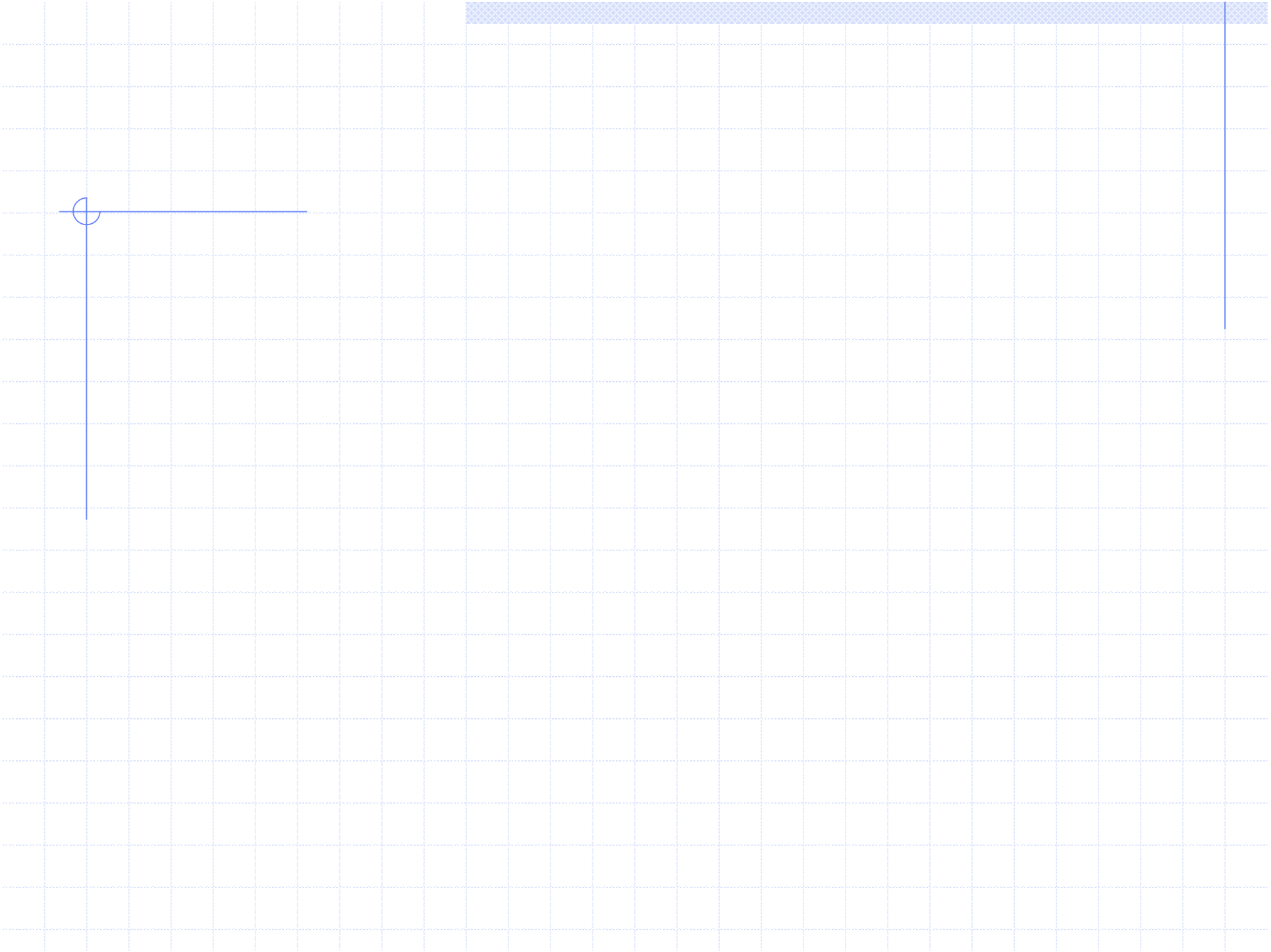
Think critically and have the chance to express themselves to others and develop their characters in a positive way 📧

?What is an E-mail Service

?What are the different parts of an E-mail

- [Sender table, [**from** 1
- [Recipient's e-mail (individual or group), [**To** 2
- [Subject of the message, [**Subject** 3
- [Body text [**Message** 4





eltegypt@yahoogroups.com

Account
name
(user name)

Means “**at**” and it refers to
the server that provides
this Service & the server’s
name comes next to it

Internet
service
Provider

The kind of
organization or
Institution that
provide the
service

E-mail Projects for ELT

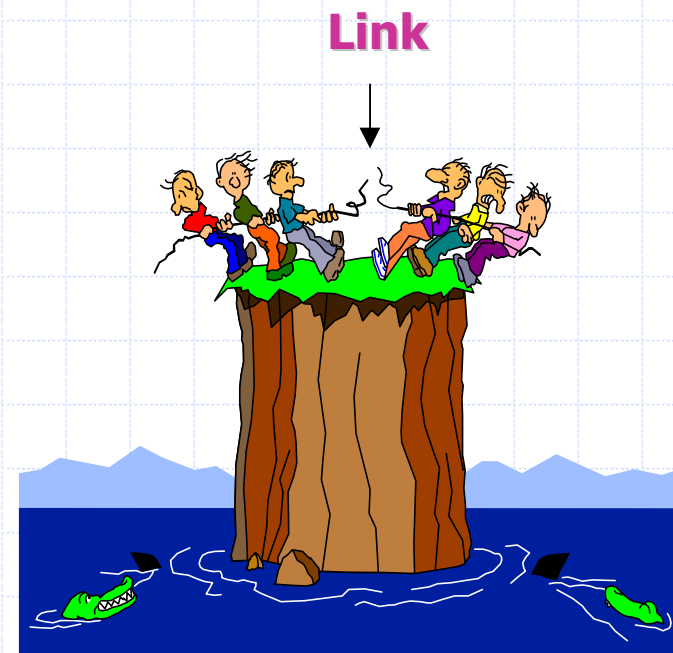
Free web-Based learning ♦
environment for classrooms
distance learning programs and
collaborative academic projects

pen-pals activities ♦

e-lists (egroups) for open ♦
educational discussions

Interests sections ♦

Newsletters ♦



Surfing for Educational Resources (2)

?What is a URL (www) address

1 2 3
<http://www.mcps.k12.us/departments/isa/elit/evalform.htm>

Tells you it is a web page ♦

(Many domain names start with www (World Wide Web) ♦

Name of business or organization ♦

Tells you what kind of site ♦

Tells you where in the computer the page stored ♦

The name of the specific page ♦

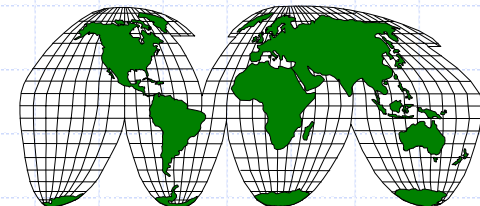
("Adopted from PeterSchwarz, "Montgomery Country Public Schools) ♦

Following web links and Hyberlinks: There are :three kinds of links

- Internal links
- Links to new web pages
- [favourite sites in a web](#)

:Using search engine

- **Topic** word/ question
- Assisting **keywords**



Tips for specifying and limiting your search

Using **AND** ...makes the searching engine looks for only those
.items that use both your words

ORfind items that use either words

NOTto limit your searching results

Adding (+) or (-) to your search. (make sure there is NO
.space between the (+) and the word that must be found

Using [“ ”]around the words means all of these words must
.be found in that order

Using [*] after a word allows you to get all the possible
.varieties of a word

Choose one proper search engine for that topic you are looking
.for

Choose a second search engine to find more information on
.your topic

Works Cited

After using a source from a web site, use
:this form

Title of web page •

(**Author** (if available •

Source of information •

Last time page was **updated** •

Date of downloading file or information •

(**URL** or (www •

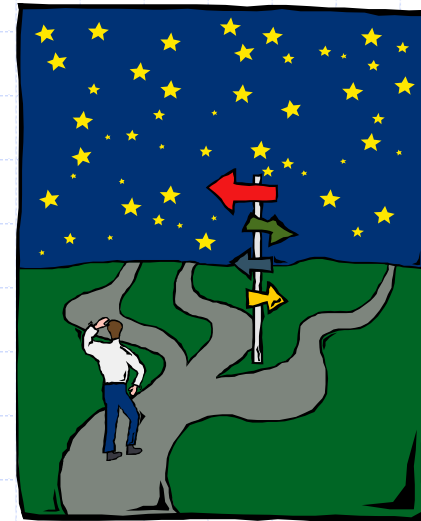
a Éî Éä éä Ö-óçì ê† ï å ðçì Å~íäçå~ät ÉÄ (Υ)
m-ÖÉ

A. Before you start working on your new web : You try to

Clarify the objective and audience of your web ♦

Outline your web links ♦

Diagram the links ♦



B. Build your web in ten easy steps

kÊi ï ÉÄ-é~ÖÉ -\

ÂêÉ~íÉ-óçì êï ÉÄ=ÅçáíÉáí -γ

cçêã ~í ïÉñí⇒àÇ=ãã ~ÖÉë -γ

.^ ÇÇ=~áãã ~íáçàI=ëçì áÇëI=Ä~Äâ Öëçì áÇ=Åçäçêë= ÉíÅ -ε

^ ÇÇ=íÜÉ=ääâë -o

íç⇒=áÉí =r o i ■

íç⇒=ÑäÉ=ää=íÜÉ=ë~ã Éï ÉÄ-é~ÖÉ ■

p~î ää Ö⇒ï ÉÄ-é~ÖÉ -γ

mêÊi áÊi =óçì êï ÉÄ -V

^ ÇÇ=í~ÄäÉë⇒ë=áÉÉÇÉÇ -Λ

c ää Ç⇒= =Üçëí=ëÉêí Éê= ⇒àÇ=ëáÖà=í é=óçì êï ÉÄ⇒ÅÇì áí -9

www.Geocities.com

www.prohosting.com

www.netfirms.com

r éäç~Ç-óçì êïÑäÉë -\♦

